

## LODGE FACT SHEET 2023

MORE Family Collection; Lion Sands Game Reserve and Lodges Pg1 | Residences and Treehouses Pg2  
Highlights; Location and Info Pg3 | Architectural Layouts Pg4 | Reference Tables Pg10

Lion Sands Ivory Lodge/Fish Eagle Residence | Tel: +27 (0)87 980 4228

Lion Sands River Lodge | Tel: +27 (0)13 735 5000

Lion Sands Tinga Lodge/Hinkwenu Residence | Tel: +27 (0)13 735 8400

Lion Sands Narina Lodge | Tel: +27 (0)13 735 8100

MORE Family Collection - Head Office/Reservations | Tel: +27 (0)11 880 9992 | Email: res@more.co.za

[www.more.co.za](http://www.more.co.za)

*MORE Family Collection owns and manages a collection of luxury safari lodges, boutique hotels, and exclusive-use residences in South Africa and Zimbabwe offering seamless itineraries between our properties. Led by custodian and CEO Robert More, ours is a fourth-generation family business - our origin dates to 1933 when our great grandfather Guy Aubrey Chalkley purchased the land that Lion Sands Game Reserve was later established on. We now have four luxury lodges at Lion Sands (Mpumalanga).*

*Our footprint is in two unique safari reserves, and our hotels in the vicinity of two Natural Wonders of the World. Our properties include Marataba Luxury Lodges (Limpopo), Cape Cadogan Boutique Hotel and More Quarters Neighbourhood Hotel (Cape Town), Stanley & Livingstone Boutique Hotel and Ursula's Homestead (Victoria Falls). We are committed to protecting the environment, community development, sustainability principles, and delivering on our purpose of creating life-enriching experiences for our guests.*

### About Lion Sands Game Reserve

Lion Sands is the only private reserve rooted in both the Sabi Sand Nature Reserve and Kruger National Park. The lodges offer exclusive traversing on private concessions. We have 10.5km of exclusive river frontage on the perennial Sabie River with our four luxury riverside lodges - Ivory, River, Tinga, and Narina. The river attracts a diversity of wildlife that guests can view from the lodge or their room.

Lion Sands conserves 12 400ha (30 600ac) of a habitat that is home to the highest and most diverse concentration of wildlife in the southern hemisphere offering exceptional game-viewing opportunities. Natural animal populations include the Big Five, along with a supporting cast of 137 mammal species and over 450 varieties of bird, and the reserve is renowned for the quality of its leopard viewing. Enjoy morning and afternoon game drives with our highly qualified field guides and trackers. Bush dinners and boma dinners will have you dining under the African stars.

The reserve includes the iconic Lion Sands Treehouse experiences (Chalkley Treehouse, Kingston Treehouse, and Tinyeleti Treehouse).

### About the Lodges

**Ivory Lodge** is all about *inspiring deep connections* to nature and one another. This five-star premium status lodge epitomises the essence of luxury and offers utter exclusivity with just eight one-bedroom Villas that witness the passage of much of the reserve's wildlife. Each Villa is spacious with a covered deck, separate lounge with fireplace and a private plunge pool. Ivory Lodge's building style melds into the riverscape and impresses with a natural and simple beauty with many places to relax and soak up the moment. Enjoy some me time at the spa or burn off some energy in the gym. Guests have the opportunity to engage with artists on the Artist Residency programme in the MORE Gallery. A dedicated Kosher kitchen is on site for our kosher guests.

**River Lodge** offers a *connection-rich safari* with 18 rooms and social areas like the outdoor firepit, veranda and bar area to gather and catch up on the day. The lodge has a chic design interpretation of the traditional safari lodge with contemporary décor and limited walls that create a flow between interior and exterior with a sense of brightness and space. Wooden walkways connect the main lodge to a spa, a gym and pool. There are eight Luxury Rooms, six Superior Luxury Rooms (two sets with interleading rooms), and four River Suites our most spacious and private. Each of the River Suites has a private plunge pool, with one of the River Suites ideally suited for families with two bedrooms. All our Rooms and Suites are set along the path revealing splendid river views. Kosher catering is available. Browse the MORE Gallery and turn wildlife photographs into artful souvenirs in the Creative Lab.

**Tinga Lodge** is the *classic safari experience*, with a focus on the senses. Nine luxury suites capture the romance of the pioneer era, in considerably more comfort. Set apart on a high bank up from the Sabie River, each Suite is privately set with its own plunge pool and deck overlooking the water making the most of a view that often sees wildlife passing through. There is also a spa sala, the main lodge with its bar lounge, library, guest pool and boma offering spaces to enjoy the company of others, or some personal quiet moments. Mack & Madi Kids' Adventure is our dedicated children's programme available at Tinga Lodge and offers a wide variety of activities on site that keep the young ones entertained. There is a dedicated playroom for arts & crafts, baking and more. Special scavenger hunts on game drives and fun 'sundowner' stops of milkshakes or hot chocolate, will create some long-lasting memories.

**Narina Lodge** is a place *nurturing natural beauty*. Perched on stilts under a canopy of 100-year-old trees just up from the water, Narina Lodge offers guests a wonderful sense of remoteness and peace, and panoramic views of the Sabie River from the main lodge or one of the nine private luxury suites. Like the Narina Trogon bird after which it is named, the lodge is astonishingly beautiful, yet blends unassumingly into the natural environment. Our Creative Lab is available for photographers to turn their images into works of art.

### **About the Residences**

**Fish Eagle Residence** is located at Ivory Lodge. This self-contained residence comes with a personal chef, residence butler, as well as a dedicated field guide team and safari vehicle for a private game viewing experience. The Residence comprises two private rooms, each with an en-suite open plan bathroom, as well as outdoor shower area. The Residence has an open living space with a fully equipped interactive kitchen, lounge, study, and dining area. The expansive deck and covered patio walk onto a 10-metre-long lap pool, while a private fire deck and star jetty overlook the Sabie River for quiet enjoyment of the natural environment. Guests also have a private spa (with double treatment room) and gym.

**Hinkwenu Residence** is located at Tinga Lodge. This stand-alone Residence in the bush makes the wildlife experience exclusive with its own hospitality and field guide teams, and safari vehicle for a more personal experience. The two spacious bedrooms have en-suite bathrooms, that include an outdoor shower area. The private pool and furnished deck ensure guests have ultimate privacy whilst relaxing. Mack & Madi Kids' Adventure programme is also available for the young ones.

### **About Lion Sands Treehouses**

Million-star **Chalkley and Kingston** (on the Sabi Sand side) and **Tinyeleti** (on the Kruger Park side) are the ultimate bush bedrooms. Here romantics, adventurers, and solitude seekers alike can discover the magic of a night out in Africa - in complete luxury. Each of the Treehouses are unique in character. Chalkley Treehouse, the original adventure, has panoramic views of the open plains. Tinyeleti Treehouse offers a starry riverside retreat. Kingston Treehouse is the ultimate luxury escape with a view over the treetops. All our treehouses have bathroom facilities with hot running water.

Guests arrive at sunset for sundowners followed by a picnic dinner and can spend the dusk hours watching animals wander past (at a safe distance and with a bird's eye view), then fall asleep counting shooting stars. A field guide is always a radio call away.

The Treehouse Experience is booked in conjunction with accommodation at the lodge, with the room available for returning to at any point.

## Highlights

- Lion Sands Kruger National Park is one of only seven private park concessions and protects pristine wilderness, as well as sites of cultural and historical significance
- Lion Sands Sabi Sand forms part of Sabi Sand Nature Reserve – the oldest private nature reserve in South Africa, established in 1948, with our grandfather as one of the founders, and still in our custodianship four generations later, instilling a legacy of community and conservation
- Non-migratory species so guaranteed safari experiences all year round
- The perennial Sabie River is renowned for attracting a diversity of wildlife and we have front row seats
- Exceptional, FGASA-accredited MORE Field Guides and highly knowledgeable Trackers
- Only six people per safari vehicle
- Four distinct lodges that suit guest's individual preferences
- Ivory Lodge is one of only 11 properties in the country to be awarded 5 Star Premium status by the Tourism Grading Council of South Africa
- The unique experiences of a night in our iconic Lion Sands Treehouses (Chalkley, Kingston, and Tinyeleti)
- All dietary needs are accommodated - Vegan, Vegetarian, Reducetarian, Halal etc - and there are Kosher catering options at Ivory Lodge and River Lodge
- Artist Residency for renowned and upcoming South African artists - a gallery and studio are situated within Ivory Lodge where artists show case their existing and new creations whilst sharing their creative process with guests
- Mack & Madi Kids' Adventure at Tinga Lodge and Hinkwenu Residence offers a wide variety of activities on site that keep children entertained and encourages them to discover, learn, create, and express themselves
- Creative Labs at River Lodge and Narina Lodge for professional and novice wildlife photographers - our photographic specialist helps transform photos into canvas artworks for the ultimate keepsake
- Voted amongst the best in the Condé Nast Traveller Readers' Choice Awards and in the Travel & Leisure's Top 100 Hotels in the World!
- All four lodges are within 12km (7mi) of Skukuza Airport and easily accessible by road from Johannesburg and Cape Town
- Flight connections from Nelspruit to Victoria Falls and Mozambique
- Seamless itineraries can be arranged between the MORE Family Collection properties

## Location

**Lion Sands Ivory Lodge and River Lodge:** are located in the south of the private Sabi Sand Game Reserve, which protects 65 000ha (160 600ac) of, arguably, Africa's most pristine Big Five territory.

**GPS co-ordinates:** Ivory Lodge 24°58'24.1"S | 31°31'46.5"E; River Lodge 24°58'16.9"S | 31°31'55.4"E

**Lion Sands Tinga Lodge and Narina Lodge:** are situated in the south of the Kruger National Park which, covering nearly two million hectares, is home to more mammal species than any other game reserve on the continent.

**GPS co-ordinates:** Narina Lodge 24°57'43.41"S | 31°33'46.51"E; Tinga Lodge 24°58'16.94"S | 31°35'0.54"E

## Weather

The average maximum temperatures range from 24°C/75°F in July to 33°C/90°F in January, with the lowest average minimum occurring in July at 8°C/46°F • The average annual rainfall is 350mm (14in), most of which occurs during midsummer (December – February) • Rain is usually in the form of thundershowers, where a downpour is experienced, very seldom lasting longer than a few hours

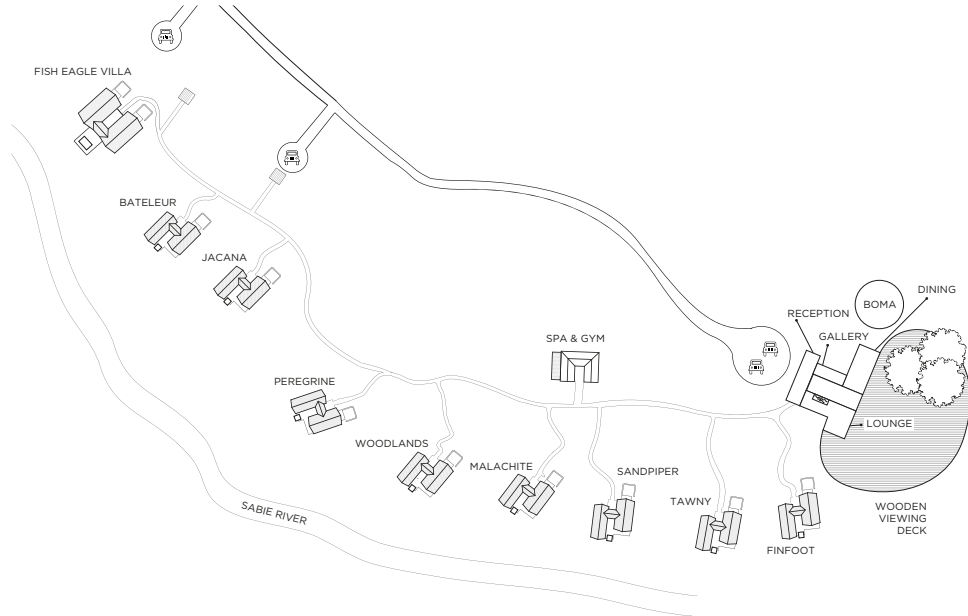
## Best Time to Travel

A year-round safari destination • The animals in Lion Sands Game Reserve are non-migratory, and variation in the safari experience is season-, rather than location-, related • The best period for birdwatching is from October to April

## Health Info: Malaria

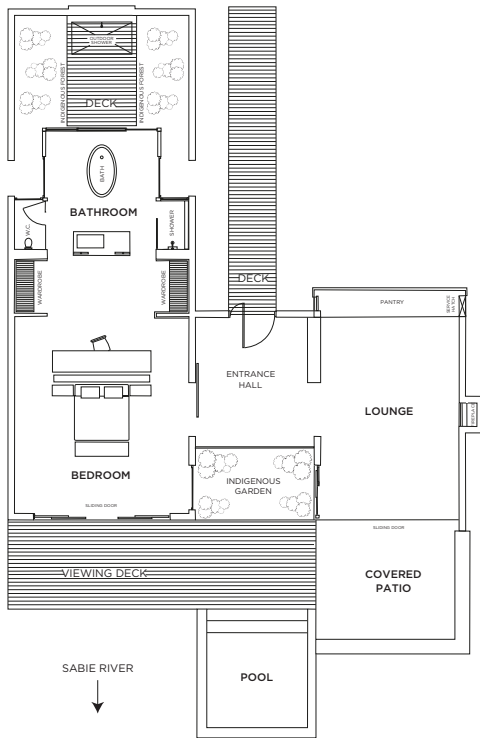
Lion Sands Game Reserve is located in a moderate-risk malaria area, and we urge guests to consult their doctors about malarial prophylactics before visiting.

## Ivory Lodge Layout



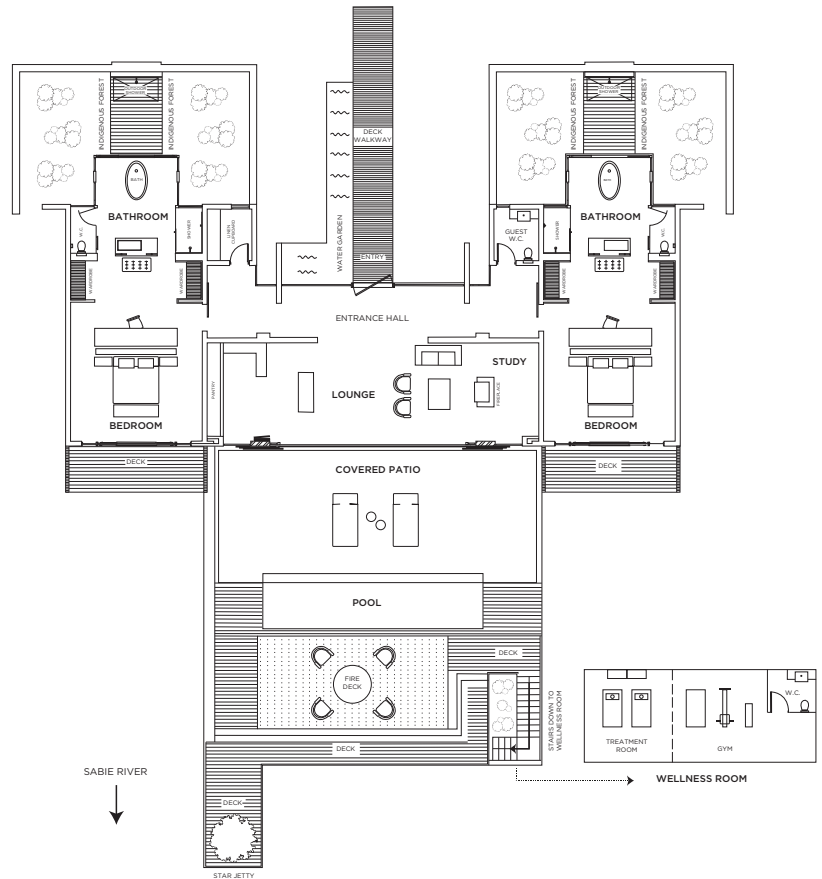
### Ivory Lodge One-Bedroom Villa Layout

Suite - 145m<sup>2</sup> | 1 560ft<sup>2</sup>  
 Viewing deck - 28m<sup>2</sup> | 300ft<sup>2</sup>  
 Total - 173m<sup>2</sup> | 1 862ft<sup>2</sup>

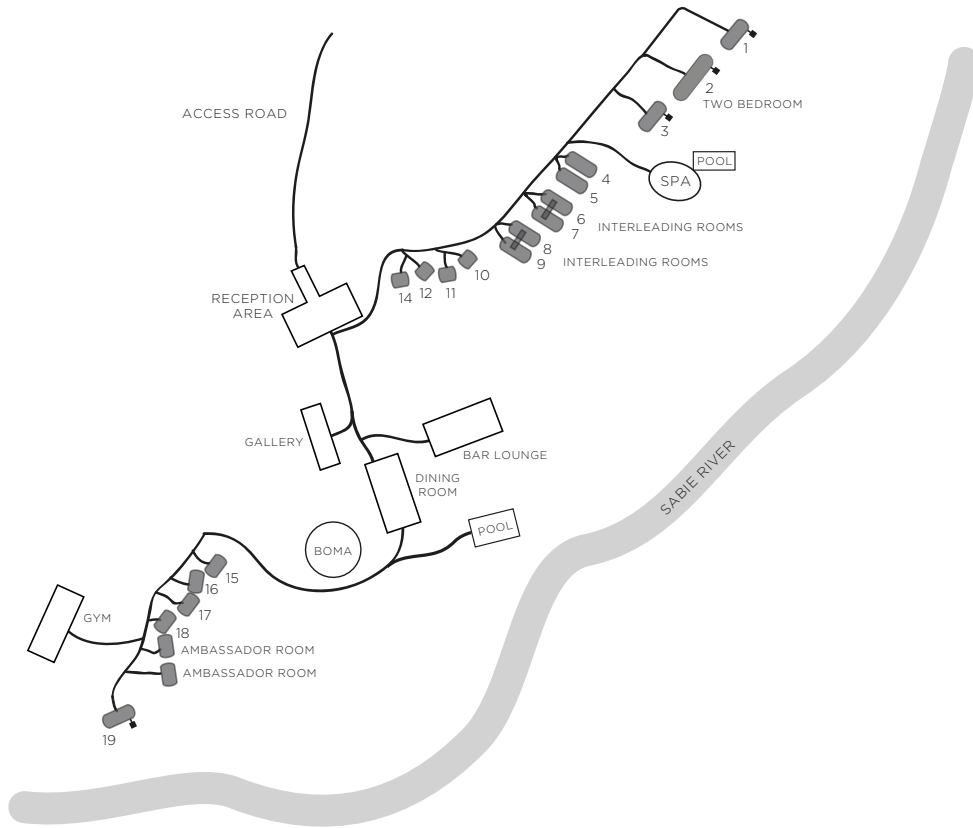


### Ivory Lodge Two-Bedroom Fish Eagle Residence Layout

Suite - 325m<sup>2</sup> | 3 500ft<sup>2</sup>  
 Viewing deck - 55m<sup>2</sup> | 600ft<sup>2</sup>  
 Wellness room - 60m<sup>2</sup> | 645ft<sup>2</sup>  
 Total - 440m<sup>2</sup> | 4 736ft<sup>2</sup>

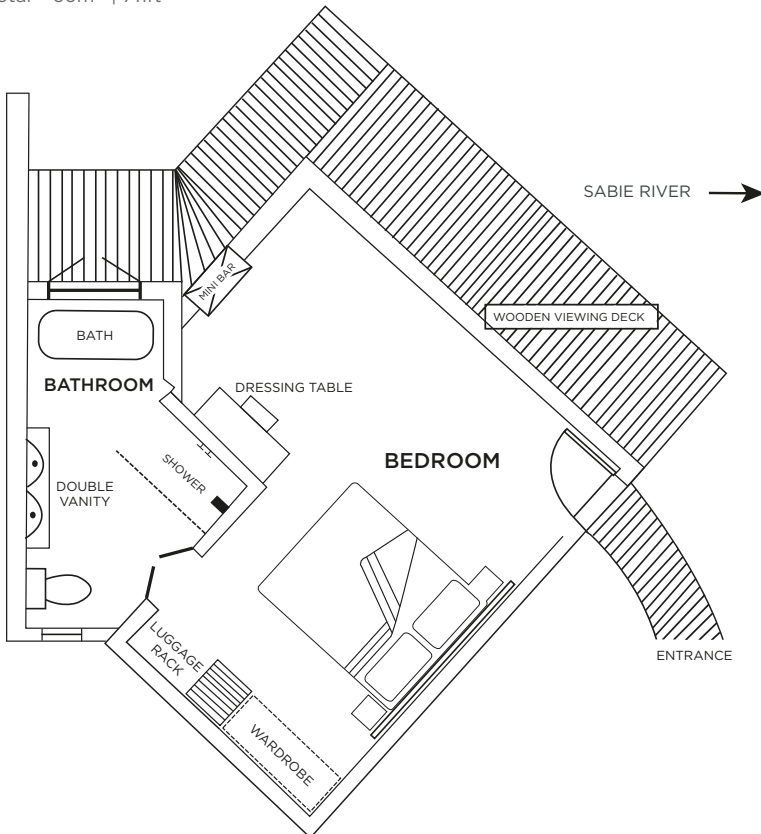


### River Lodge Layout



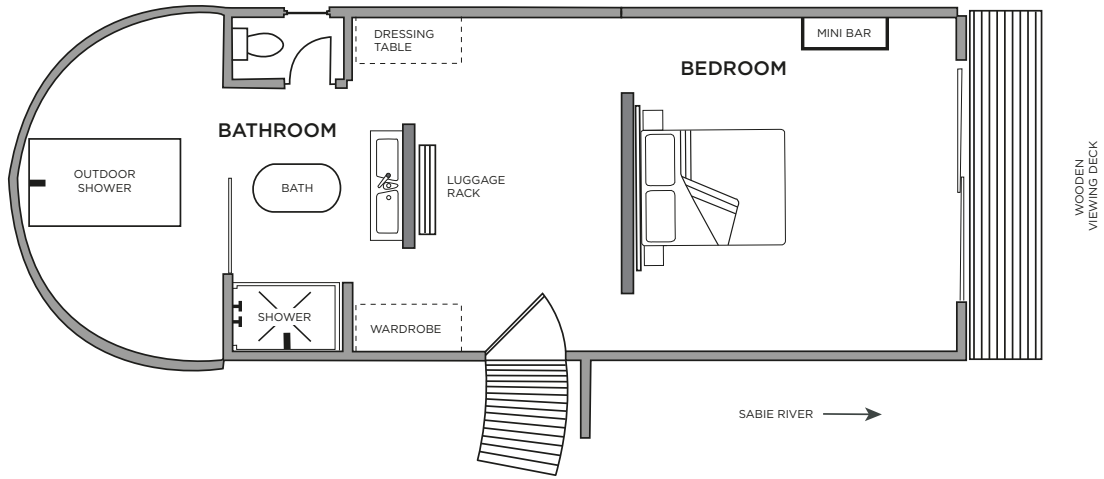
### River Lodge Luxury Room Layout

Room - 54m<sup>2</sup> | 581ft<sup>2</sup>  
 Exterior - 12m<sup>2</sup> | 130ft<sup>2</sup>  
 Total - 66m<sup>2</sup> | 711ft<sup>2</sup>



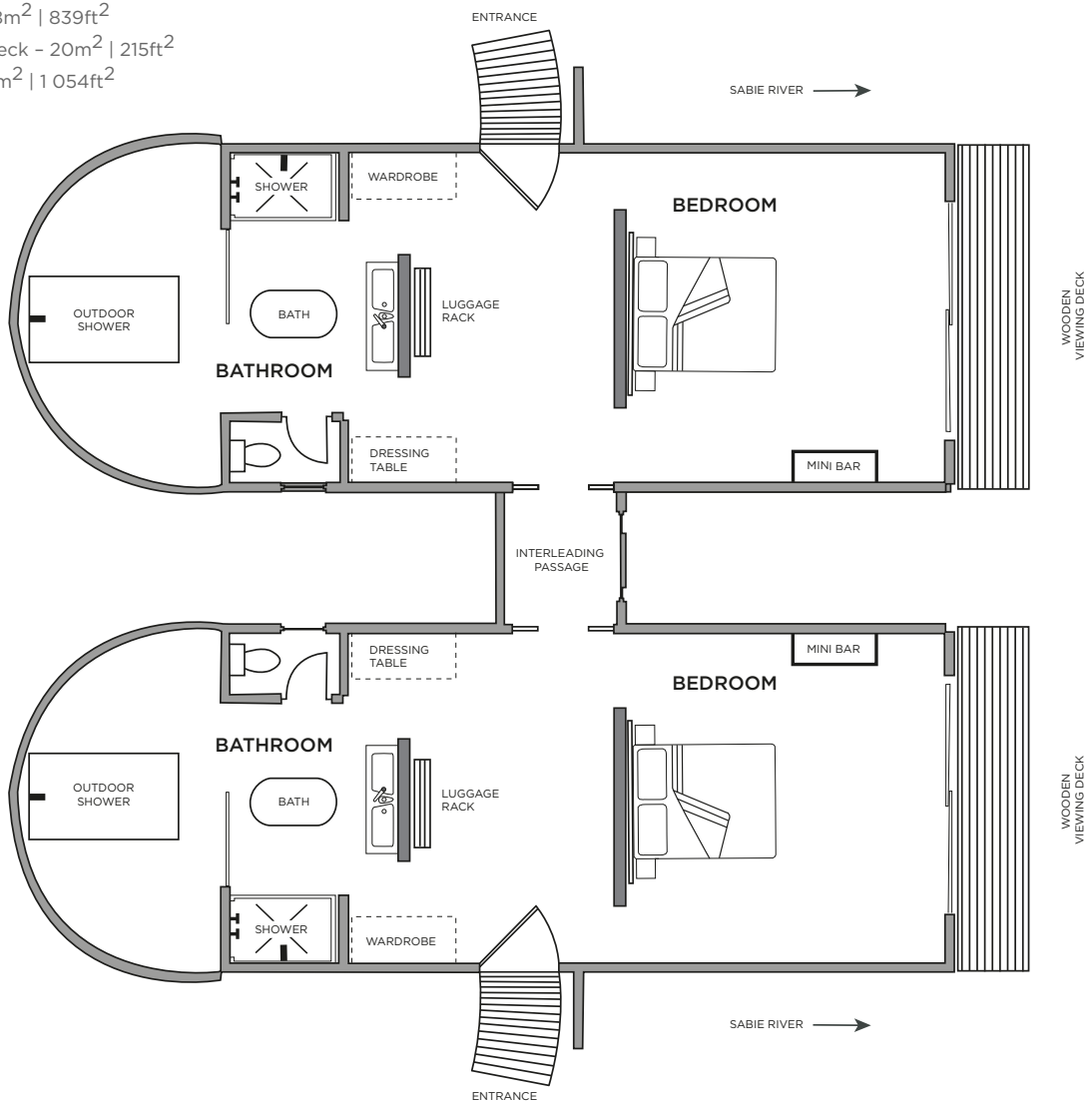
**River Lodge**  
**Superior Luxury Room Layout**

Room - 78m<sup>2</sup> | 839ft<sup>2</sup>  
 Viewing deck - 20m<sup>2</sup> | 215ft<sup>2</sup>  
 Total - 98m<sup>2</sup> | 1 054ft<sup>2</sup>



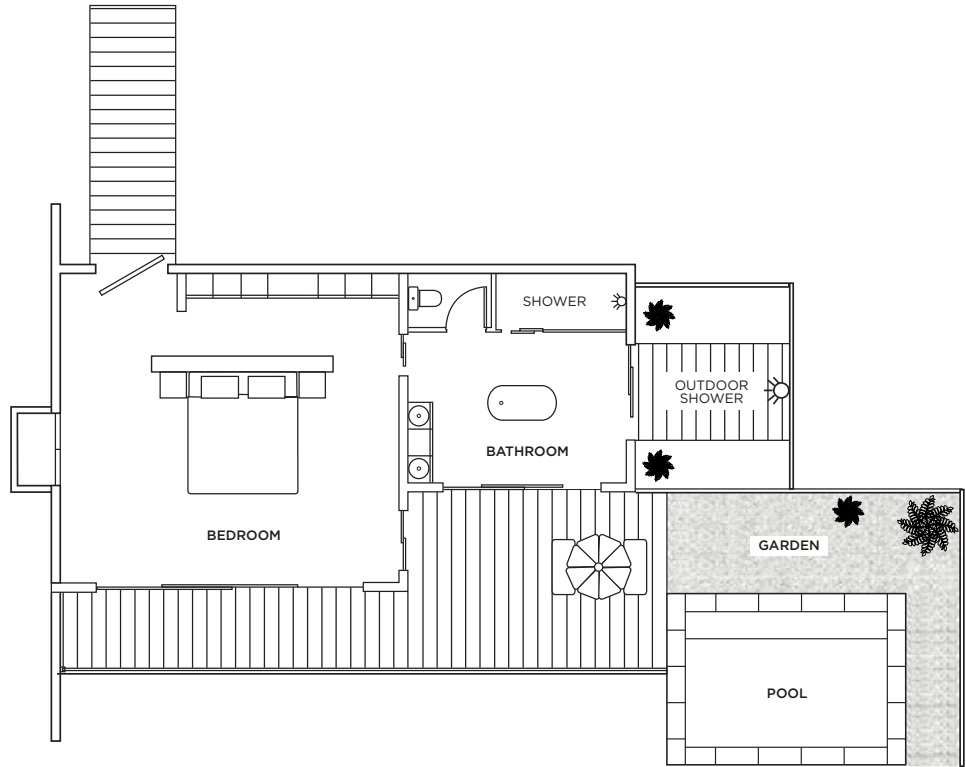
**River Lodge**  
**Interleading Superior Luxury Room Layout**

Room - 78m<sup>2</sup> | 839ft<sup>2</sup>  
 Viewing deck - 20m<sup>2</sup> | 215ft<sup>2</sup>  
 Total - 98m<sup>2</sup> | 1 054ft<sup>2</sup>



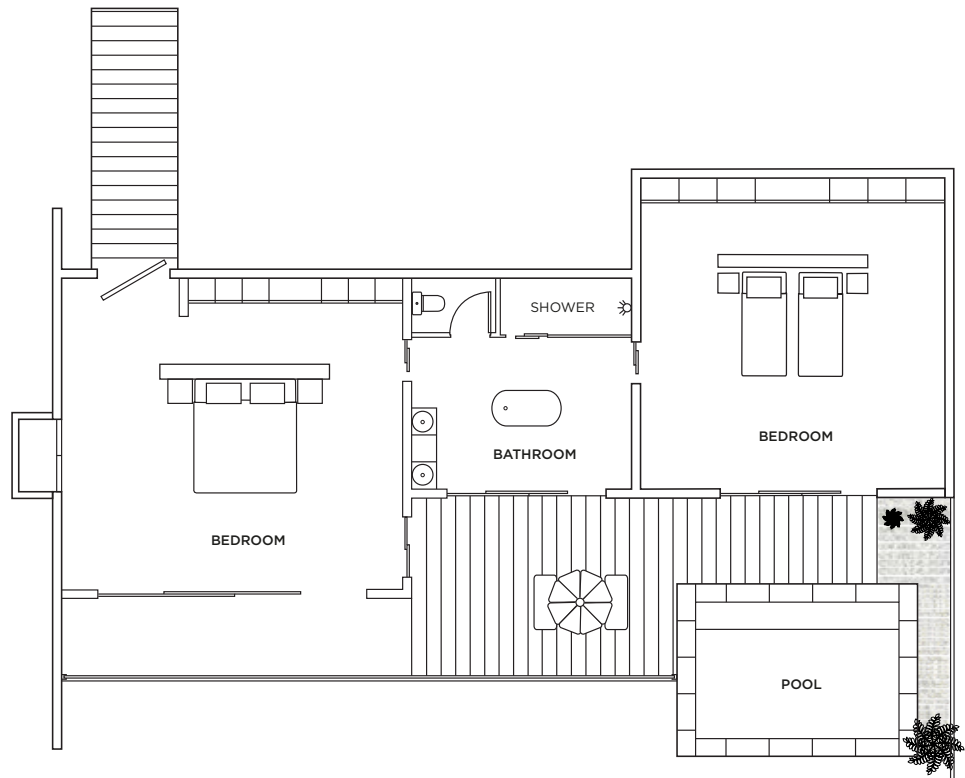
**River Lodge**  
**One-Bedroom River Suite Layout**

Suite - 82m<sup>2</sup> | 883ft<sup>2</sup>  
Outside shower - 12m<sup>2</sup> | 129ft<sup>2</sup>  
Viewing deck - 35m<sup>2</sup> | 377ft<sup>2</sup>  
Pool - 13m<sup>2</sup> | 140ft<sup>2</sup>

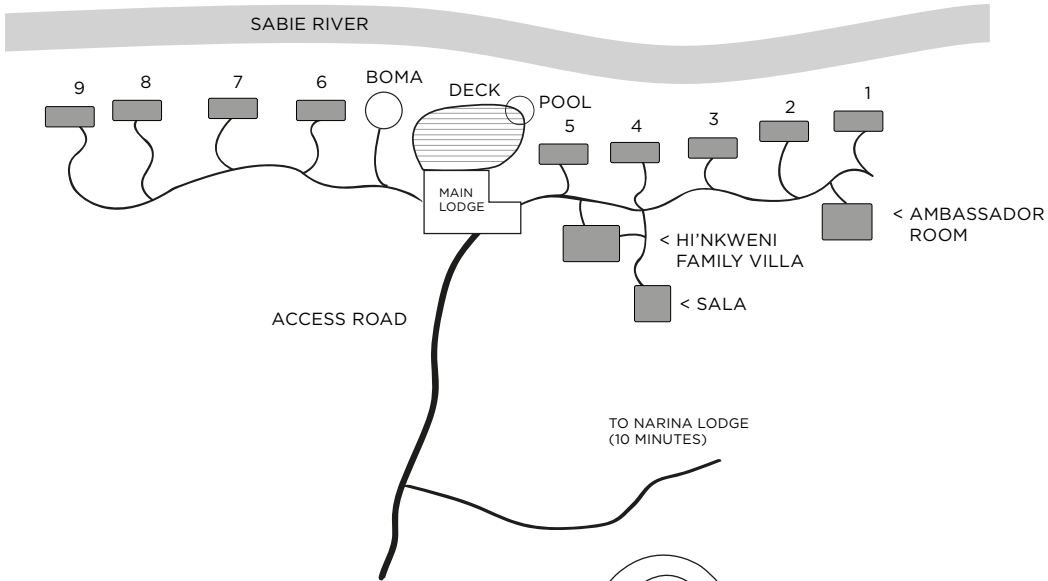


**River Lodge**  
**Two-Bedroom Family River Suite Layout**

Suite - 123m<sup>2</sup> | 1324ft<sup>2</sup>  
Viewing deck - 42m<sup>2</sup> | 452ft<sup>2</sup>  
Pool - 13m<sup>2</sup> | 140ft<sup>2</sup>

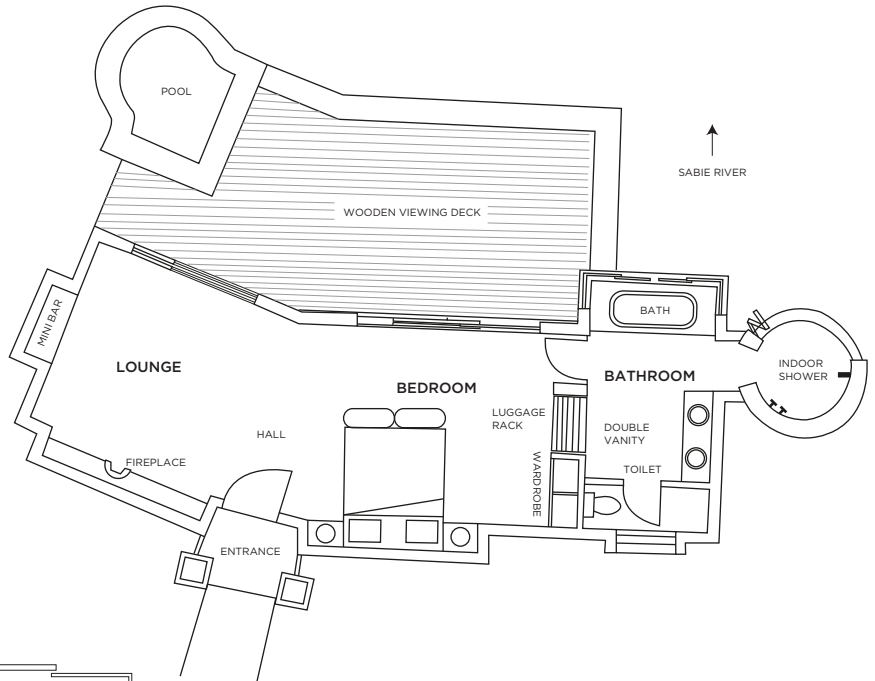


**Tinga Lodge Layout**



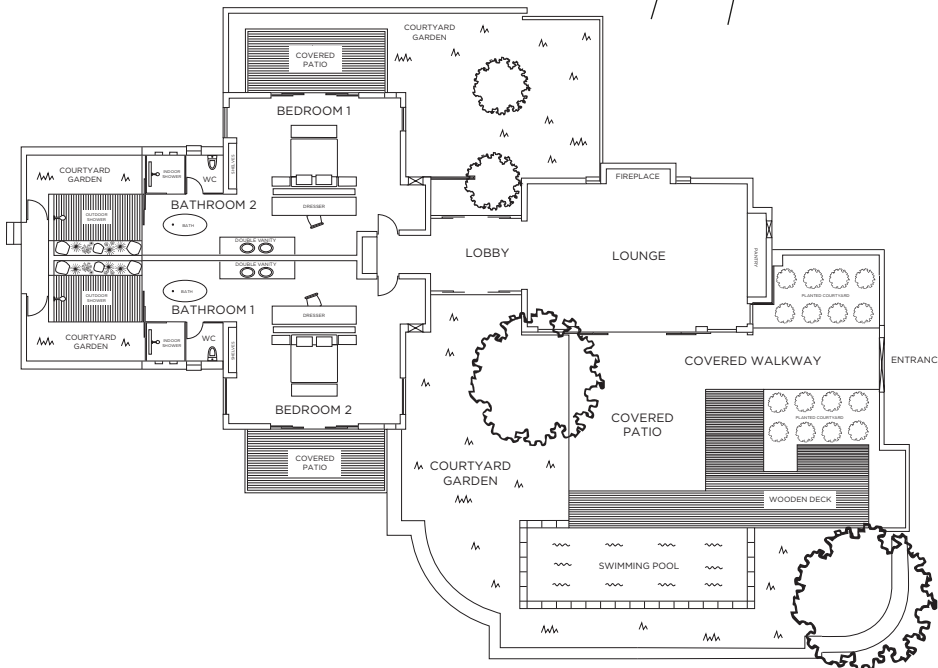
**Tinga Lodge Suite Layout**

Interior - 80m<sup>2</sup> | 860ft<sup>2</sup>  
 Exterior - 45m<sup>2</sup> | 484ft<sup>2</sup>  
 Total - 125m<sup>2</sup> | 1 344ft<sup>2</sup>



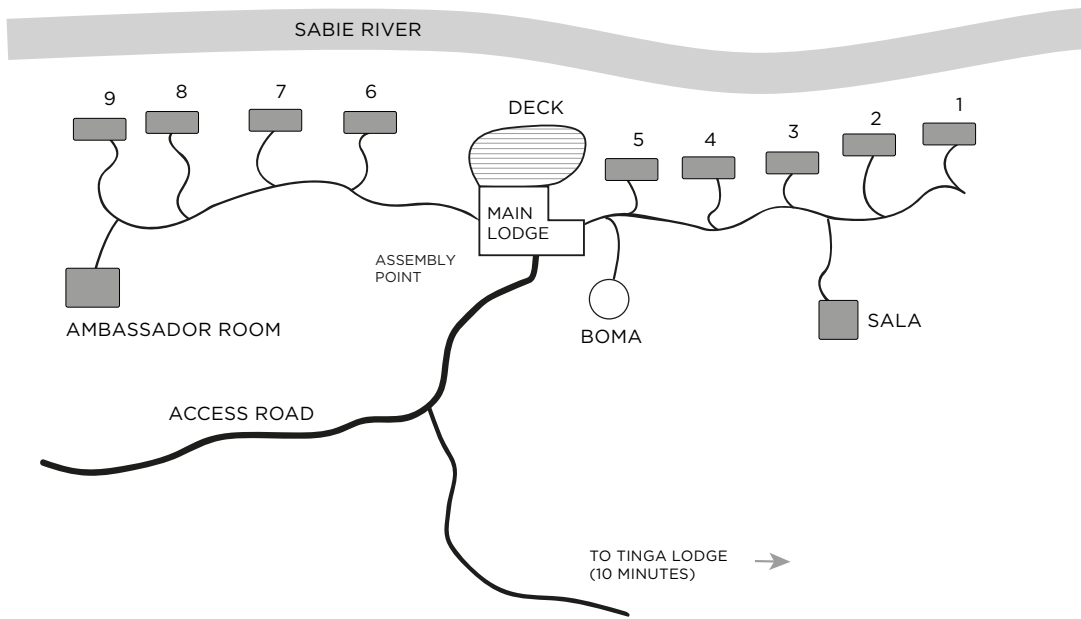
**Tinga Lodge Two-Bedroom Hinkwenu Residence Layout**

Interior - 220m<sup>2</sup> | 2 368ft<sup>2</sup>  
 Exterior - 125m<sup>2</sup> | 1 345ft<sup>2</sup>  
 Total - 345m<sup>2</sup> | 3 714ft<sup>2</sup>



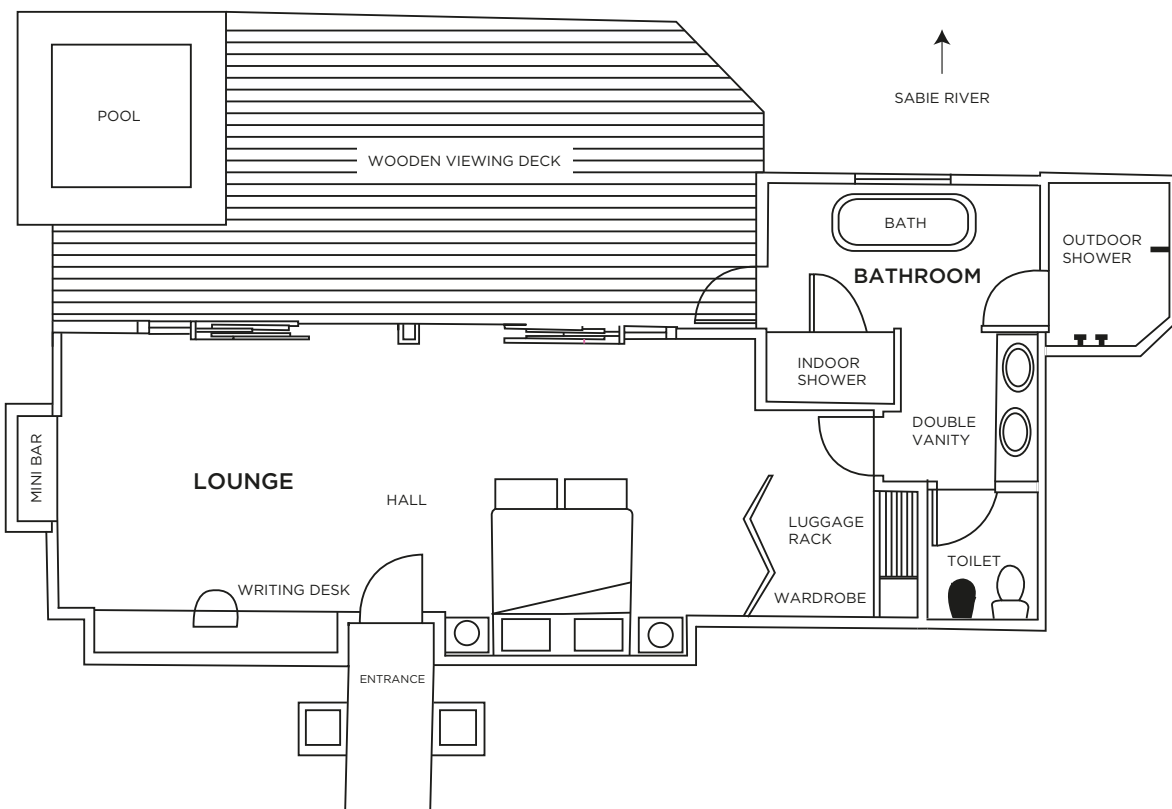


## Narina Lodge Layout



## Narina Lodge Suite Layout

Interior - 80m<sup>2</sup> | 860ft<sup>2</sup>  
 Exterior - 45m<sup>2</sup> | 484ft<sup>2</sup>  
 Total - 125m<sup>2</sup> | 1 344ft<sup>2</sup>



## Reference Table - Ivory Lodge and River Lodge

Reference	Ivory Lodge	River Lodge
Suites	8 Villas   1 Fish Eagle Residence	18 Rooms: 8 Luxury (L)   6 Superior Luxury (SL) - incl. 2 sets of interleading rooms   4 River Suites (RS) - incl. 1 Family River Suite (FRS)
Size of suites	Villas: 145m <sup>2</sup> /1 560ft <sup>2</sup>   Fish Eagle Residence: 325m <sup>2</sup> /3 500ft <sup>2</sup>	L: 66m <sup>2</sup> /710ft <sup>2</sup>   SL: 98m <sup>2</sup> /1 054ft <sup>2</sup>   RS: 129m <sup>2</sup> /1 388ft <sup>2</sup>   FRS: 165m <sup>2</sup> /1 776ft <sup>2</sup>
Guests	20	38
Children	Yes: Villas (>10 years)   Fish Eagle Residence (all ages)	Yes (>10 years)
Children's rate	10 to 15 years (50% of adult pps rate if sharing with an adult)	10 to 15 years (50% of adult pps rate if sharing with an adult)
Children on safari	Private game drives (all ages) Twice-daily game drives (>10 years)	Yes (>10 years)
Children activities	Yes	Yes
Childminding	Yes (additional cost)	Yes (additional cost)
Triple rooms	Fish Eagle Residence (x2 rooms)	No
Single traveller supplement	Yes (50% supplement)	Yes (50% supplement)
Double bed convertible to twin	Yes	Yes
Treehouses	Chalkley Treehouse and Kingston Treehouse	
Central guest pool	No	Yes
Private plunge pool	Yes	Yes (River Suites)
Air conditioning	Yes	Yes
Fireplace	Yes	Yes (guest areas)
Room fans	Yes	Yes
Mosquito nets	Yes	Yes
Outdoor shower	Yes	Yes (Superior Luxury Rooms and River Suites)
Indoor showers	Yes	Yes
Separate WC	Yes	Yes (Luxury Rooms and River Suites)
Free Wi-Fi	Yes (all areas)	Yes (all areas)
Satellite television	No	Yes (guest area)
In-room telephone	Yes (direct dial)	Yes (direct dial)
Mobile coverage	Fair: 40%	Fair: 40%
In-room safe	Yes	Yes
Personal bar	Yes	Yes
Hairdryer	Yes	Yes
Laundry service	Yes (included)	Yes (additional cost)
Conference facilities	No	Yes
Spa	Yes	Yes
Gym	Yes	Yes
Suitable for disabled guests	No	Yes (with assistance)
Distance between rooms	20-25m/60-75ft	0-8m/0-25ft
Closest airport	Skukuza Airport (25 minutes away)	Skukuza Airport (25 minutes away)
Helipad	Yes (24°58'2.22"S   31°31'30.20"E)	
Guests per open safari vehicle	6	6
Private open safari vehicle	Fish Eagle Residence (included) Villas (additional cost, subject to availability)	No
Languages of field rangers	English, Afrikaans, Shangaan, Zulu	English, Afrikaans, Shangaan
Gratuity recommendation	ZAR750* per guest per day *Specific allocations clarified on request	
Kosher dining	Yes (dedicated Kosher kitchen). Booked with prior notice and at an additional cost	Yes (self-supervised). Booked with prior notice and at an additional cost
Power	220V AC	220V AC
Credit cards	Mastercard, Visa, Amex, Diners	Mastercard, Visa, Amex, Diners
Cheques	Not accepted	Not accepted

## Reference Table – Tinga Lodge and Narina Lodge

Reference	Tinga Lodge	Narina Lodge
Suites	9 Suites   1 Hinkwenu Residence	9 Suites
Size of suites	Suites: 125m <sup>2</sup> /1 344ft <sup>2</sup>   Hinkwenu Residence: 220m <sup>2</sup> / 2 368ft <sup>2</sup>	125m <sup>2</sup> /1 344ft <sup>2</sup>
Guests	24	18
Children	Yes: Suites (>6 years)   Hinkwenu Residence (>6 years)	Yes (>16 years)
Children's rate	6 to 15 years (50% of adult pps rate if sharing with an adult)	No
Children on safari	Twice-daily game drives (>6 years)	No
Children activities	Yes	No
Childminding	Yes (additional cost)	No
Triple rooms	2 Suites and Hinkwenu Residence	2 Suites
Single traveller supplement	Yes (50% supplement)	Yes (50% supplement)
Double bed convertible to twin	Yes	Yes
Treehouse	Tinyeleti Treehouse	
Central guest pool	Yes	No
Private plunge pool	Yes	Yes
Air conditioning	Yes	Yes
Fireplace	Yes (guest areas) Hinkwenu Residence	Yes (guest areas)
Room fans	Yes	Yes
Mosquito nets	Yes	Yes
Outdoor shower	Yes	Yes
Indoor showers	Yes	Yes
Separate WC	Yes	Yes
Free Wi-Fi	Yes (all areas)	Yes (all areas)
Satellite television	Yes (guest area)	Yes (guest area)
In-room telephone	Yes (direct dial)	Yes (direct dial)
Mobile coverage	Good: 80%	Fair: 40%
In-room safe	Yes	Yes
Personal bar	Yes	Yes
Hairdryer	Yes	Yes
Laundry service	Yes (additional cost)	Yes (additional cost)
Conference facilities	No	No
Spa Sala	Yes	Yes
Gym facilities	No	No
Suitable for disabled guests	Yes (with assistance)	No
Distance between rooms	10–15m/33–49ft	10–15m/33–49ft
Closest airport	Skukuza Airport (5 minutes away)	Skukuza Airport (15 minutes away)
Helipad	Yes (24°58'7.64"S   31°35'33.92"E)	
Guests per open safari vehicle	6	6
Private open safari vehicle	Hinkwenu Residence (included) Suites (additional cost, subject to availability)	Suites (additional cost, subject to availability)
Languages of field rangers	English, Afrikaans, Shangaan, Zulu	English, Afrikaans, Shangaan, Zulu
Gratuity recommendation	ZAR750* per guest per day *Specific allocations clarified on request	
Power	220V AC	220V AC
Credit cards	Mastercard, Visa, Amex, Diners	Mastercard, Visa, Amex, Diners
Cheques	Not accepted	Not accepted

## Reference Table - Treehouse Circuit

Reference	Chalkley Treehouse	Kingston Treehouse	Tinyeleti Treehouse
Location	Sabi Sand side	Sabi Sand side	Kruger Park side
Number of guests	2 adults	2 adults and 2 children (10 to 14 years)	2 adults and 2 children (10 to 14 years)
Stargazing	Yes, countless	Yes, countless	Yes, countless
Shower	Yes	Yes	Yes
Vanity	Single	Double	Double
Radio comms and cell signal	Yes	Yes	Yes
Wi-Fi	You must be joking!	You must be joking!	You must be joking!
Safety features	Single door, secure stairway, two-way radio contact	Single door, drawbridge, two-way radio contact	Double safety door, two-way radio contact
Season	Year-round (weather dependant)	Year-round	Year-round (weather dependant)
View	Onto the open savannah	Out over the treetops	Across to the Sabie River
Size in decking	40m <sup>2</sup> /430ft <sup>2</sup>	60m <sup>2</sup> /645ft <sup>2</sup>	50m <sup>2</sup> /540ft <sup>2</sup>
Height above ground	8m/26ft	10m/33ft	8m/26ft
Dining	Gourmet picnic basket and selected drinks from our beverage list	Gourmet picnic basket and selected drinks from our beverage list	Gourmet picnic basket and selected drinks from our beverage list